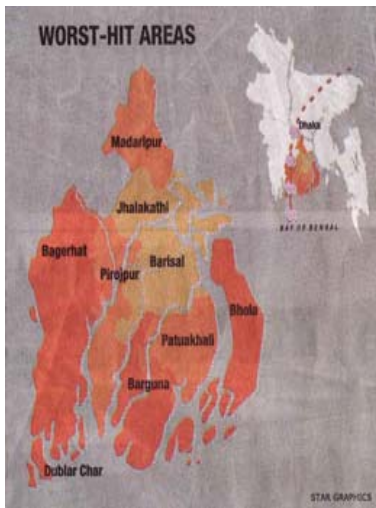


Emergency Medical Relief to the Cyclone Victims of Southwestern Cost of Bangladesh, 2007

A joint mission of AMDA Bangladesh, AMDA Japan and Japan Bangladesh Friendship Hospital (JBFH)

Bangladesh dated with an incubus as cyclone Sidor ripped through the southwestern coast late Thursday, 15th November with wailing wind and tidal surges, killing over 2,300 people and demolishing uncountable houses, crops and trees alike along its trail of devastation extending over thousands of square kilometer areas.

Around 11 costal districts have been affected badly by the cyclone Sidor. Government, UN bodies, European Union and NGOs have been disbursed emergency relief aid right away and started distributing relief material among the victims of cyclone Sidor that battered the southern part of the country.



A painful last hour (a survivor's remembrance in Mirjagonj Upazila, Patuakhali)

As the storm increased its force across Subidkhali village under Mirzaganj upazila in Patuakhali, Mr. Afzal decided that it was no longer safe to remain in his house. He and his wife gathered their two children Mukti, 12, and Miraz 7, in their arms and stepped out to make their way to safety.

In moments the dam over the river Payra broke down as the hurricane escalated, flooding it banks and washing away what most of what was on it.

Mr. Afzal could only hear his wife screaming. In his efforts to try and reach out for his wife and son, Afzal did not realize when the flood gushed away his only daughter from his arms. He saved his own life when he was washed across a tree and managed to hang on to a branch from it.....

Source: Daily Stat, 17th November, 2007

Patuakhali is one of the most affected districts out of 11 Districts.

Considering the overall situation AMDA Bangladesh has taken a decision to launch its emergency medical relief initially in **Mirzaganj Upazila, Patuakhali District** supported by AMDA International, Japan.

Communications between the districts are disrupted as roads and highways were strewn with uprooted roadside trees. Therefore the emergency medical team would be reaching in the target area by river from Dhaka. It would take about 7-8

Dispatching dry food, drinking water, medicines and house building materials on emergency basis to the worst ever cyclone affected areas have become urgent need of the hour to save the suffering humanity according to our local representative.

At a glance Death and Loss

Primary Official Estimate:

Death Total	2,300
Death feared	10,000
Affected families	887,000
Livestock death	242,000
Crops destroyed	23,000 acres

Source: Daily Star, 19th November, 2007

Considering the resources availability of AMDA and Japan Bangladesh Friendship Hospital (JBFH) at present a joint emergency medical relief team would be dispatched to the one of the most affected areas.

Location: Mirzaganj Upazila, Patuakhali District

Duration of the mission: Approx. 10 days initially subject to further possible extension.

Target beneficiaries to cover: 200 patient/ day (Total Approx. 2000 patients)

Type of Assistance:

1. To provide mobile emergency health care services to the victims.
2. To dispense essential life saving drugs (ORS, Antibiotic, Analgesic, Metronidazole, Mebendazole, skin care etc.
3. To provide 50,000 water purifying tablets.
4. To provide minor surgeries to the injured patients.
5. Distribution of dry foods.
6. Primary healths care for preventive measure.

1st Emergency team consists with 10 members as follows:

1. Coordinator from AMDA Japan- 2
2. Coordinator from AMDA Bangladesh- 2
3. Medical Doctor from JBFH – 2

4. Paramedics from JBFH- 2
5. Health Assistant from JBFH- 2

The emergency team would move along with two Japanese coordinators from AMDA International, Japan on 23rd November, 2007.

Besides the emergency responses the team also would assess the need of the areas to extend the possible further supports to the victims for the resettlement and rehabilitation during the post emergency and seek the possibility of fund raising from the potential donors locally and abroad.

Based on the availability of the fund the next mission would remain standby to proceed for further intervention in the affected areas.

Estimated budget is enclosed herewith. Please find the attachment.

Reported: 20th November. 2007, S. A. Razzak, AMDA Bangladesh